



# Planning & Budgeting Cloud Solution (PBCS)

Budget Submission Training and Demonstration

August 2019

# Agenda & Goals



## Today's Agenda

<b>1</b>	PBCS Overview
<b>2</b>	Roles & Tasks
<b>3</b>	Budget Process
<b>4</b>	Demonstration
<b>5</b>	Questions & Answers

## Today's Goals

*Provide overview of PBCS and its capabilities*

*Provide information on how PBCS can/will be utilized at Pitt*

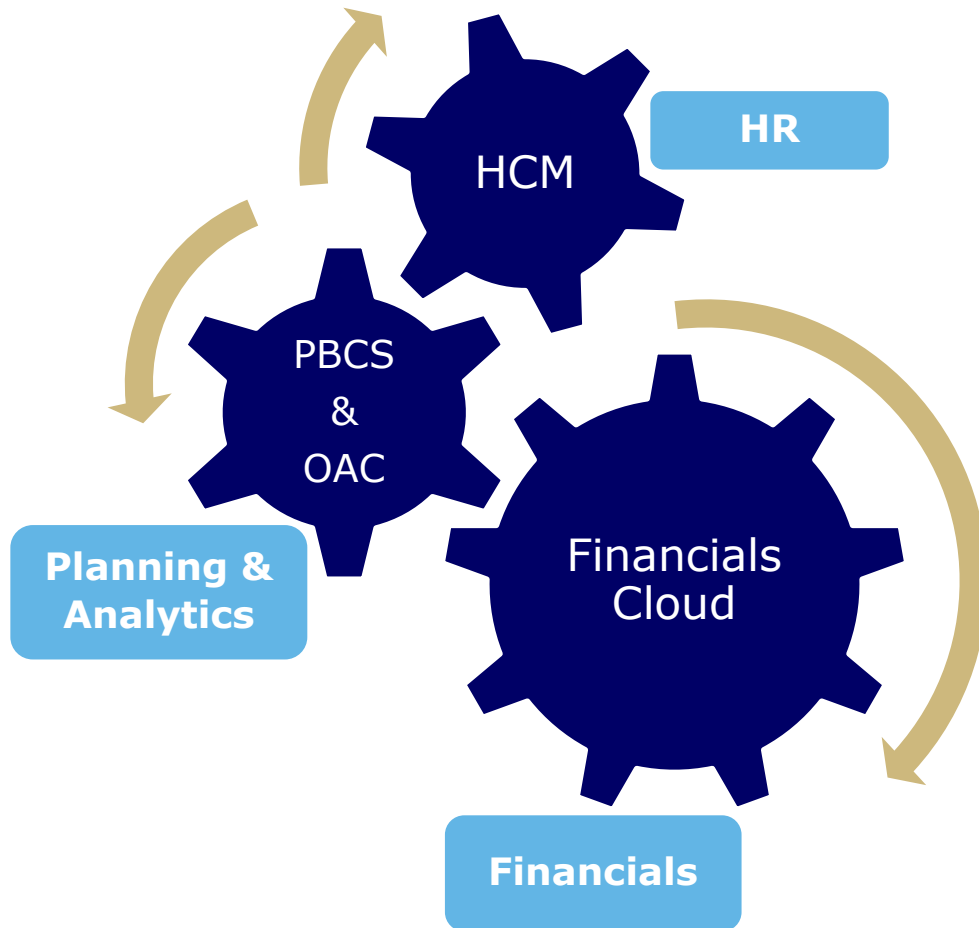
*Provide information on how to enter the 2020 budget*

---

# **PBCS Overview**

---

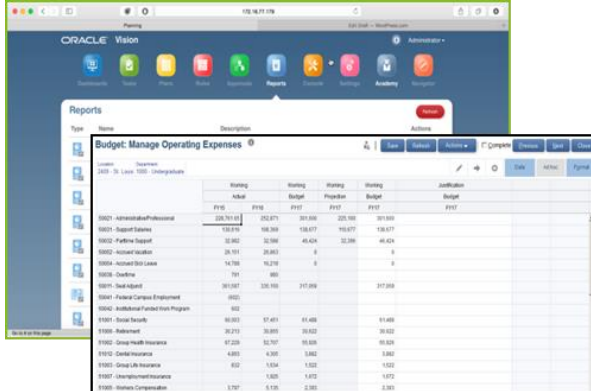
# Cloud Transition at Pitt



- Pitt is engaged in a transition to “Cloud” based solutions
- As part of this, financial systems are being re-implemented using Oracle cloud technologies
- While moving from Oracle EBS (PRISM) is the main undertaking in this transition, there are other ancillary components that are also being transitioned
- In the area of “Planning & Analytics” PBCS (Planning & Budgeting Cloud Service) is being utilized, and rolled out in advance of Financials Cloud for the FY2020 budget

# What is PBCS

- PBCS at Pitt stands for “Planning and Budgeting Cloud Solution”
- It is an Oracle, cloud-based tool that is used for financial planning and reporting
- The system provides a pre-defined framework for planning activities, allowing for organization to configure to their needs
- The system provides a platform for:
  - Budgeting
  - Forecasting
  - Strategic Modeling
  - Reporting
  - Other types of financial planning



Account	2019 - 20		2020 - 21		Justification
	Budget	Actual	Budget	Actual	
0001 - Administration/Professional	252,871	252,871	252,871	252,871	0001
0002 - Support Services	158,575	158,575	158,575	158,575	0002
0003 - Patient Support	32,862	32,862	45,424	32,286	0003
0004 - Account Location	24,141	24,141	0	0	0004
0005 - Account Day Loans	14,700	14,700	0	0	0005
0006 - Outlines	767	767	0	0	0006
0007 - Staff Support	303,987	303,987	310,288	310,288	0007
0008 - Public Campus Employment	800	800	0	0	0008
0009 - Institutional Funded Loan Program	0	0	0	0	0009
0010 - Public Security	30,000	37,451	41,450	41,450	0010
0011 - Retirement	30,210	30,890	30,620	30,620	0011
0012 - Group Health Insurance	47,220	47,707	49,800	49,800	0012
0013 - Dental Insurance	4,000	4,100	3,600	3,600	0013
0014 - Group Life Insurance	600	1,004	1,000	1,000	0014
0015 - Unemployment Insurance	1,000	1,400	1,400	1,400	0015
0016 - Workers Compensation	1,100	1,100	1,100	1,100	0016

**ORACLE**  
CLOUD



# PBCS Current Deployments

## Phase-1: Reporting and Encumbrances

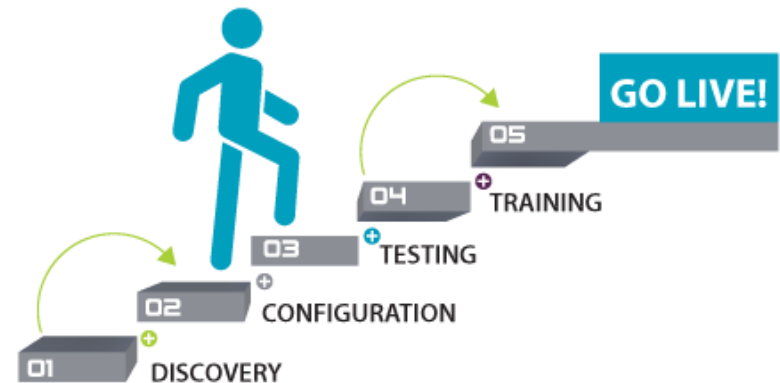
Completed June 2018  
and April 2019

- Standard Reports at RC Level with Drill Through Capabilities
- Monthly Quick-Drill Reports - Concept of YTD Budgets
- Manual and Automated Encumbrance Functionality
- Tuition Revenue Model (used centrally for FY 2020)

## Phase-2: Budgeting

August 2019

- Pre-Seeded Budgets
- Budget Load and Approval
- Ability to Monitor YTD Budgets





# How is this different?

## Prior Budget System

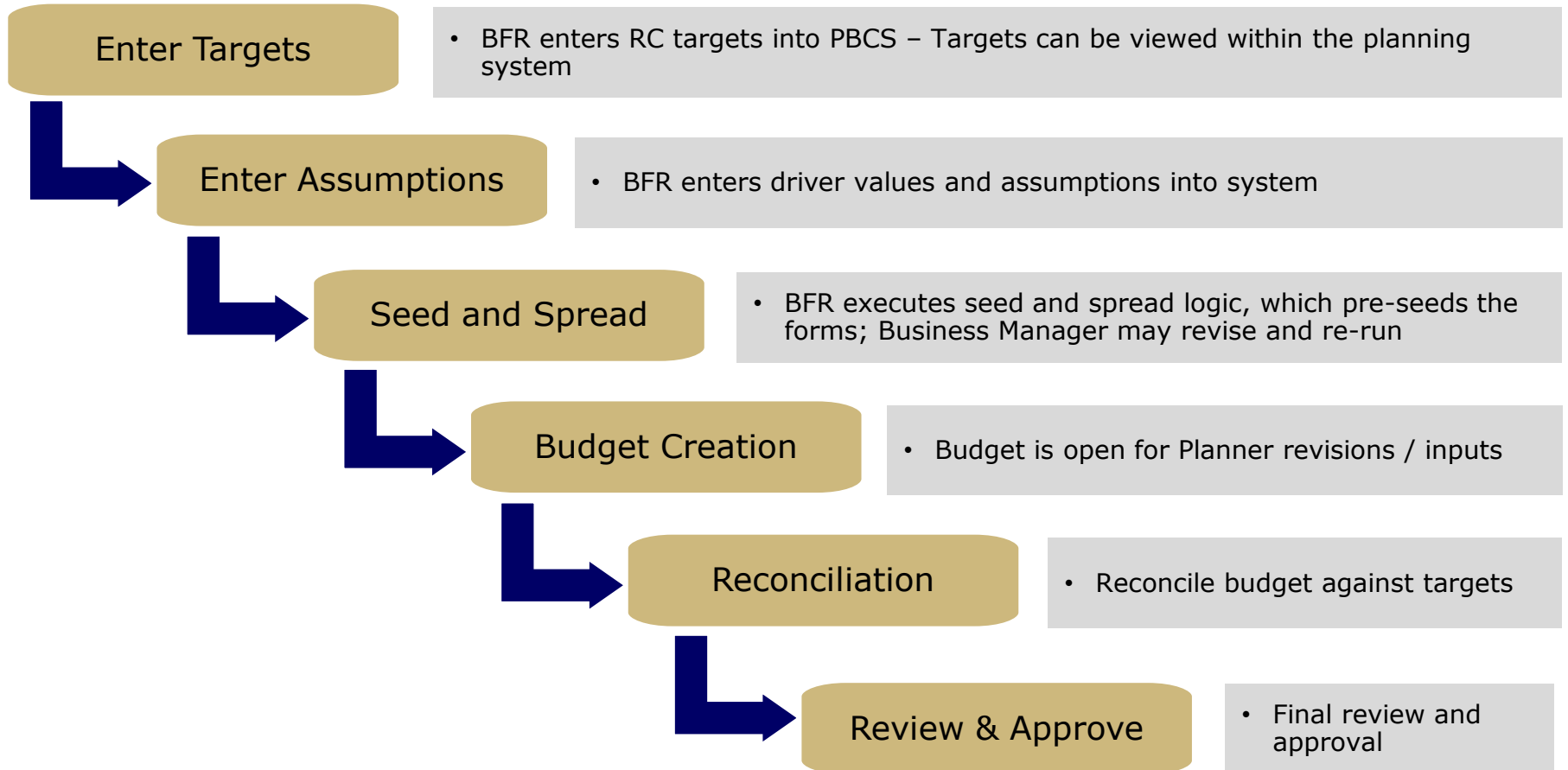
- System authored specifically for the purpose of budget entry at Pitt (purpose built), with no other capabilities
- Not designed for reporting or analytics
- System holds the current year of budget data only

## PBCS

- Provides ability to house several different data sets across many years (Actuals, Encumbrances, Budget, Forecasts, BMRs, etc.)
- Provides reporting across scenarios, all year long
- Provides reporting "on-the-fly" as you are executing the budget (do not need to wait for PRISM upload to report on budget)
- Capability to execute complex calculations (account calcs, seeding, spreading, allocations)



# Budget Process at Pitt







# User Roles

## Tasks & Activities

### Business Managers

- Review or Re-Run Pre-seeded Budgets
- Enter and/or Review Budget
- Reconciliation Process (as designated)
- Approvals

### Standard Planners

- Enter and/or Review Budget
- Reconciliation Process (as designated)

A user guide is located on the PBCS webpage, which provides step-by-step procedures:

<https://prism.pitt.edu/applications/planning-and-budgeting-cloud-service-pbcs/>



# How Does This Work...

**Tasks: All Task Lists**

Filter: All

Name

- ▶ **Planner**
- ▶ **Business Manager**
- ▶ **Budget Reconciliation**
- ▶ **Administrator**

• Planners navigate the budget process through a series of "directed" task lists or menu items...

- ▼ **Budget Entry**
  - ▼ **Operating Budget - 02**
    - Operating Budget - 02**
    - Operating Budget - 02 - Revenue**
    - Operating Budget - 02 - Comp**
    - Operating Budget - 02 - Non-Comp**
    - Operating Budget - 02 - Totals**

• Based on your security profile, you will have access to the appropriate tasks and accounts

---

# **Demonstration**

---

---

# Questions

---