

Flex@Pitt technology, computer
purchasing, Canvas training, summer
IT changes, and more...

No images? [Click here](#)



The University has adopted the [Flex@Pitt](#) teaching model for the upcoming fall term. Pitt IT and the University Center for Teaching and Learning are working to quickly implement the required hybrid classroom technology in over 200 locations across the Pittsburgh campus that are scheduled through the Office of the University Registrar.

[Learn more about the hybrid classroom technology that is being implemented ...](#)

Flex@Pitt Technology

Computer Purchasing and Standardization



Pitt IT has launched the Computer Purchasing and Standardization Program for use by University academic and administrative units. When it's time to purchase a new PC, simply contact your department's IT support or purchasing administrator to buy the appropriate standard device through [PantherExpress](#). It can be sent directly to your home or campus address. *Note: Faculty are encouraged, but not required, to participate.*

Device Consistency Offers Many Benefits:

- Streamlined purchasing and ship-to-home process, plus significant cost savings
- More effective technical support and security, with enterprise device management
- Easy to set up right out of the box, without departmental IT assistance
- Standard University software is pre-loaded on the device
- Devices can run standard apps from any location, through the cloud or locally
- Virtual desktops can be leveraged for specialty or demanding apps

[Learn more about purchasing a new device ...](#)

[View Devices & Order Now](#)

Canvas Training Opportunities

University Center for Teaching and Learning

search

Canvas @ Pitt Canvas Training Resources FAQs News & Updates Contact Us

Canvas @ Pitt - Training

14 JUL **Introduction to Canvas | Part 1**
Getting Started Welcome to Canvas, Pitt's new learning management system! This introductory training focuses primarily on the global functions of Canvas (the Course...
July 14, 2020
10:00am to 11:00am

15 JUL **Introduction to Canvas | Part 2**
Adding, Organizing and Sharing Content How can Canvas, Pitt's new learning management system, help out to organize and present your course content? This training will...

CANVAS LINKS
Canvas @ Pitt
Canvas Training
Resources
FAQs
News & Updates
Contact Us

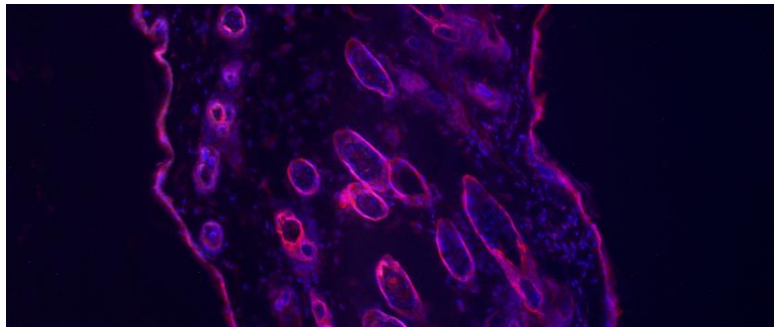
The University has transitioned to the [Canvas Learning Management System \(LMS\)](#) for most courses this summer, and all fall 2020 courses are now available in the system. Because Flex@Pitt plans will include a significant online component to classes, it is important that you

become comfortable with the interface and capabilities of Canvas. Fortunately, the University Center for Teaching and Learning has made a variety of resources available to help you get started:

- Register for [live, virtual training seminars](#); they are being held all summer.
- [User guides and how-to resources](#) are available on the Teaching Center site.
- Access [on-demand videos and recorded webinars](#) for training at your convenience.

Register for Canvas Training

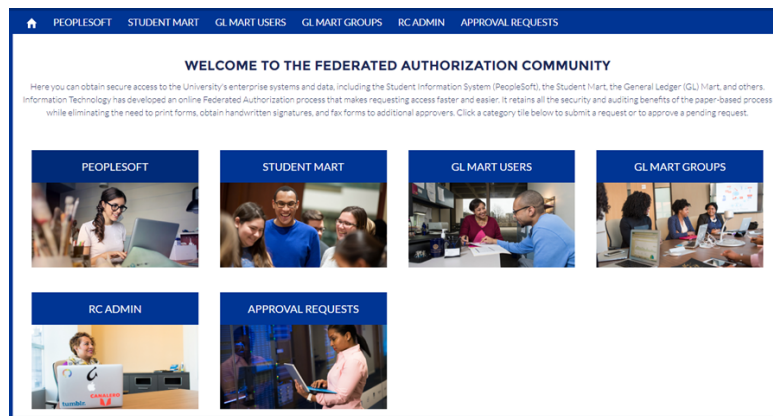
Combating Allergies & Supporting Students with Electronic Research Notebooks (LabArchives)



Research requires more than collecting, analyzing, and presenting data. It's easy to get bogged down in the details of managing a lab, especially when your staff is small and you're mentoring undergraduate researchers. Tina Sumpter, research assistant professor of Dermatology, uses [Electronic Research Notebooks \(LabArchives\)](#) to make it work—even during a pandemic.

Read How She Makes It Work

A Summer of IT Changes



Here's a quick rundown of some of the upgrades we've made so far this summer:

- [Upgraded My Pitt and Pitt Mobile](#)

The new site has a streamlined design optimized for mobile, with new features like personalized bookmarks/collections and the ability to dismiss announcements. A modernized Pitt Mobile app is also available from the Apple or Google app store.
- [Virtual Support Now Available](#)

Virtual Support provides video-based support for issues that are difficult to resolve via phone, email, or chat. To get started, visit pi.tt/virtualsupport and grant a consultant remote access. (Hours: Mon-Fri, 8 a.m.-6 p.m. and Sat, 8 a.m.-4 p.m.)
- [PittNet Wi-Fi Network Consolidation](#)

Pitt IT has merged the University's two PittNet Wi-Fi networks. The merger simplifies connecting to PittNet Wi-Fi, while delivering the same speed and reliability of the previous networks. The combined network uses the same **Wireless-PittNet** name.
- [Federated Authorization Community](#)

This centralized destination enables users to digitally request access to University enterprise systems, like the Student Information System (PeopleSoft) or General Ledger Mart. It retains all the security and auditing benefits of the paper-based process, while eliminating the need to print and route forms to obtain handwritten signatures. Access to the Federated Authorization Community is available from any device, using almost any web browser.

Introducing Overleaf Commons



Pitt is now offering Overleaf professional accounts to all students, faculty, and staff. The Overleaf Commons subscription allows users to harness the full power of Overleaf, including access to premium features like track changes, reference management, branded templates, training assets, and administrative analytics/metrics.

Many users on campus already have accounts for Overleaf's web-based LaTeX editor. They were looking for an easy, more consistent way to bring students and collaborators into their projects via Overleaf. Overleaf Commons allows Pitt IT to deliver professional accounts to new users and enable premium features for those with existing accounts.

[Get Started with Overleaf](#)

Adobe Creative Cloud Across the Curriculum Summer Webinar Series



Adobe is offering a series of free training designed for faculty and instructors looking to leverage Adobe Creative Cloud in their curriculum.

- **Digital Literacy and Creativity for All:**
Getting Started with Adobe Spark Across the Curriculum
Thursday, July 30 at 4 p.m. ET
- **Digital Agility Across the Curriculum:**
Adobe Creative Cloud as a Mobile, Scalable Makerspace
Thursday, August 6 at 4 p.m. ET

[Register for Adobe Training](#)

FROM THE PANTHER BYTES BLOG



1. [Go Digital: Skip the Printer, Help the Earth](#)
2. [Anything Skype Can Do, Teams Can Do Better](#)
3. [My Cyber-Safe COVID Summer Wish List](#)
4. [What Gen-Z Wishes You Knew About How They Use Technology](#)
5. [Pitt IT Summer Tech Upgrades](#)

24/7 IT Help Desk

- **Call** [412-624-HELP](tel:412-624-HELP)
- **Submit** a [Service Request](#)
- **Chat** [with an Expert](#)
- **Email** helpdesk@pitt.edu
- **Search** [How-To Articles](#)
- **Drop-In** [Hands-on Help](#)
- **Virtual Support** [via Zoom](#)

Share This Newsletter

We encourage you to forward this email to other University of Pittsburgh faculty and staff so everyone can be an IT Insider.

Subscribe to IT Insider



University of Pittsburgh

Computing Services and Systems Development
717 Cathedral of Learning, Pittsburgh, PA 15260

You are receiving this email because you signed up for the monthly Pitt IT Faculty and Staff IT Newsletter.

[Unsubscribe](#)